

IMPRESSIONS

Creative Ideas for Walls and Ceilings



这是德国原装产品Catalogue，部分产品在亚洲区域暂未有存货，
以及销售方式与欧洲略有不同，详情请与深圳工作室联系。
最终解释权归“石爱石深圳”所有。



StoneslikeStones GmbH®

IMPRESSIONS

Creative Ideas for Walls and Ceilings



StoneslikeStones GmbH®



WELCOME AT STONESLIKESTONES, YOUR SPECIALIST FOR CUSTOM INTERIORS

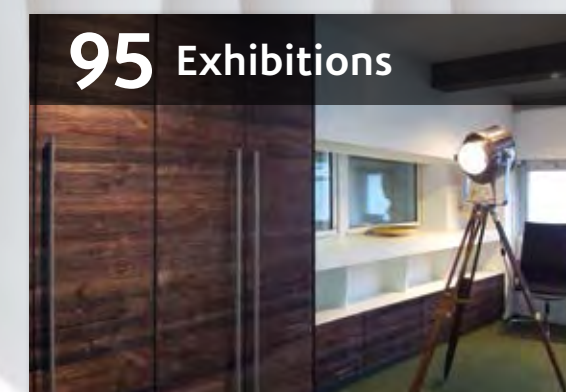
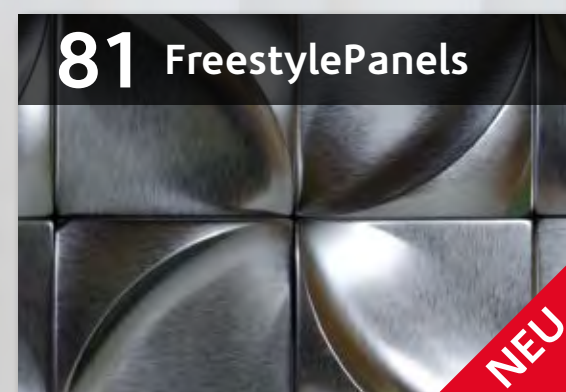
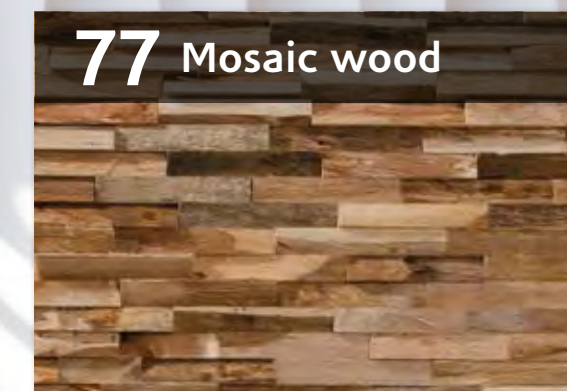
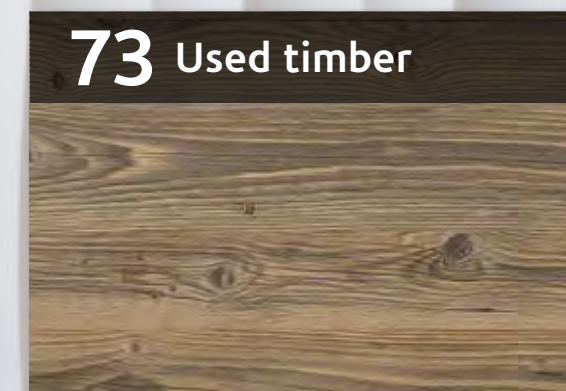
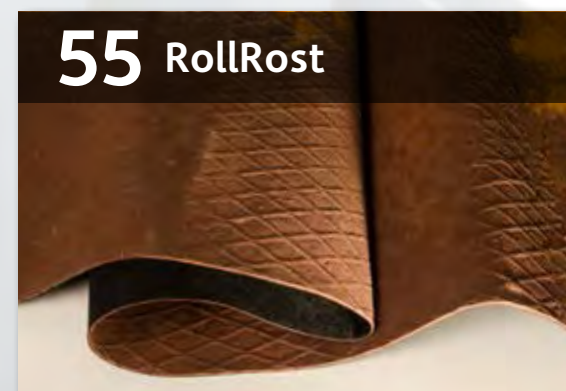
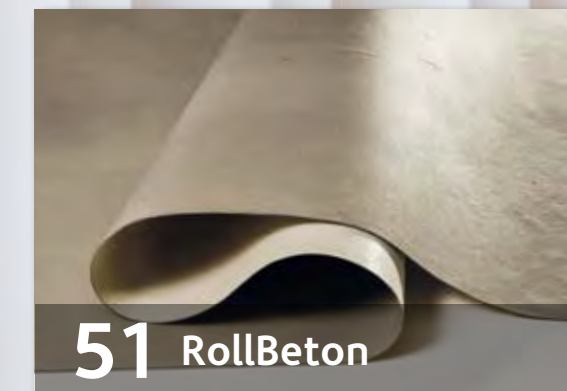
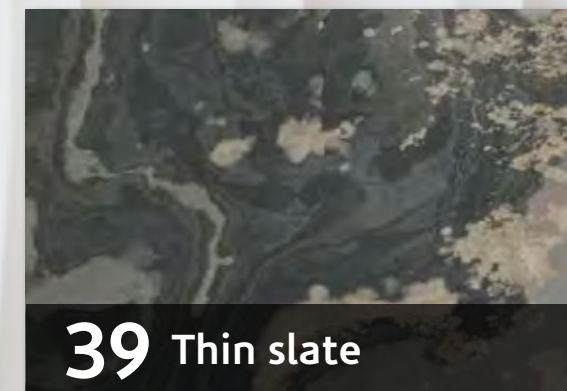
We have been offering intelligent solutions for walls and ceilings for more than 15 years. Our broad product spectrum offers virtually endless interior design options for residential or commercial objects. Our offering ranges from traditional and modern to Mediterranean.

Our products satisfy highest quality standards and offer outstanding longevity and wear resistance, as well as an astoundingly natural look and feel. All our products can be installed in record time and are even reversible. We maintain own shipping warehouses to ensure that most of our products are available within a very short time.

On request, we can task our partner Wall-Install with the dispatch of installation teams for your project.

This brochure will offer you some insight into our broad product spectrum.

LET US INSPIRE YOU.



**UNLEASH
YOUR CREATIVITY ...**

CONTENT

We have put together
a wide variety of different
materials for you
on the following pages.

MSD-Stone panel

GRP WITH ROCK POWDER FINISH



MSD STONE PANEL: INDIVIDUALITY WITHOUT LIMITS

MSD stone panels offer virtually endless possibilities for customised interiors.

More than 50 different stone designs in our portfolio make sure of that.

Their uses are just as unlimited as their patterns.

The designs are perfect for any interior.

Our MSD stone panels can be found in many restaurants, hotels, spa and wellness centres, as a shop-in-shop solution, on trade fair stands, and across all areas of commercial shop interiors.

ADVANTAGES AT A GLANCE:

- 3D renderings of original stone walls
- Panels in GRP (glass fibre reinforced plastic) and premium quality resin with rock powder finish
- the creates an astoundingly authentic non-fade stone look and feel
- large-area panels up to 3.28 x 1.30 m (4.26 m²) for fast installation
- low weight (approx. 7 kg per m²) in comparison with natural stone
- easy screw connection system for quick installation and removal
- no visible seams – joints are filled and coloured with specialist grout
- most designs are available immediately

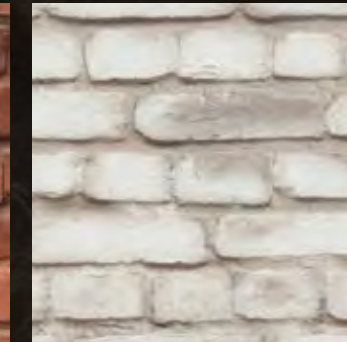
SELECTION FROM THE PRODUCT RANGE – IN STOCK



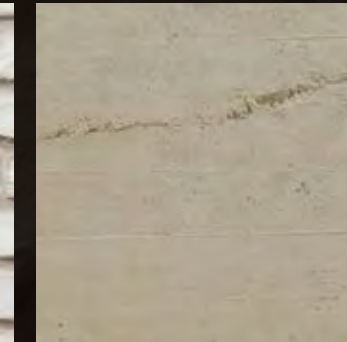
Ladrillo Loft classic 232



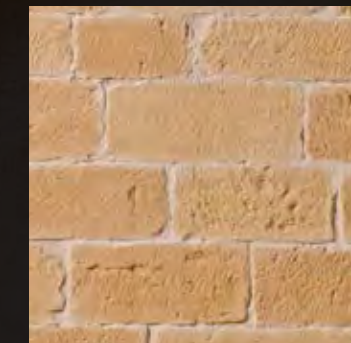
Ladrillo Loft dark red 280



Ladrillo Loft sucio 328



Beton 127



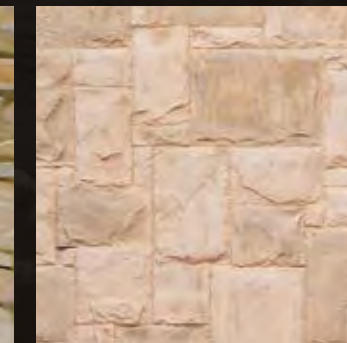
Picada blanca castellana 214



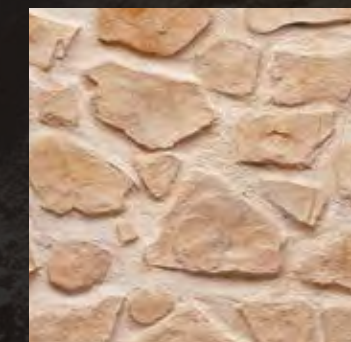
Lajas gris 257



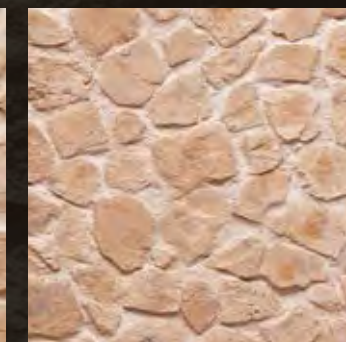
Rustica cobriza 301



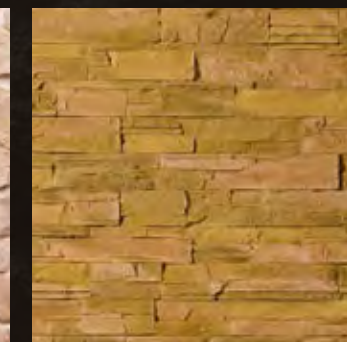
Laberintho 255



Mamposteria blanca castellana 202



Lastra blanca castellana 207



Lascas ocre 261



Navarrete terrosa 312

Use the QR code to visit the overview of all our decorative stone panels:
www.stoneslikestones.eu/steinpaneel/kunststein_paneel.html



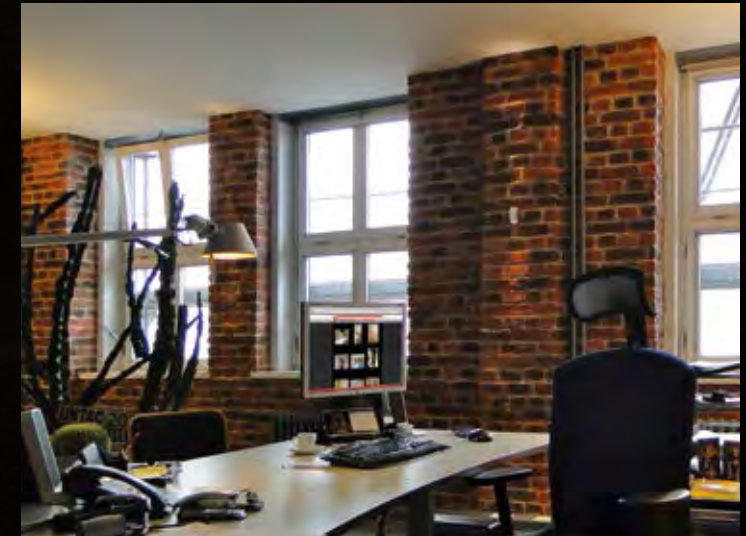


AUTHENTIC INDUSTRIAL LOOK LADRILLO LOFT CLASSIC

Our Loft stone panels are modelled after the “empire size” bricks dating back to 1872. The panel recreates the authentic look and feel of a loft or factory wall – perfect for trendy living areas, offices, and restaurant or bistro.



Fitness centre with 3D replicas of individual bricks.



TOP Window display
BOTTOM Office interior





The brewery Sion in Cologne



Next generation shop interiors and catering (image left): exemplary installation finish with the stone panel Ladrillo Loft blanco 228



OUR FOUR WALLS CAN BE SO MUCH MORE

There is no end to what you can achieve with our MSD stone panels.

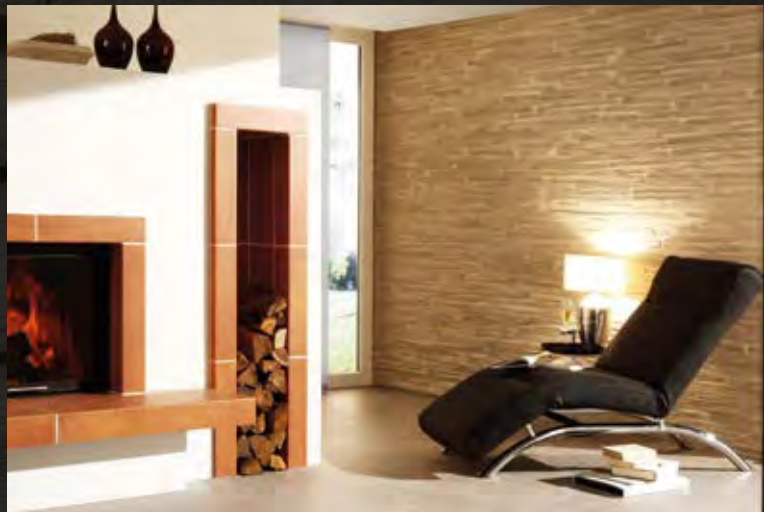
Cosy, timeless, rustic or Mediterranean look – our premium quality replica stone walls create an unmistakeable ambiance and reflect your individuality when it comes to aesthetic interiors.

And best of all: all panels can be installed with relatively little effort – on walls or on ceilings.



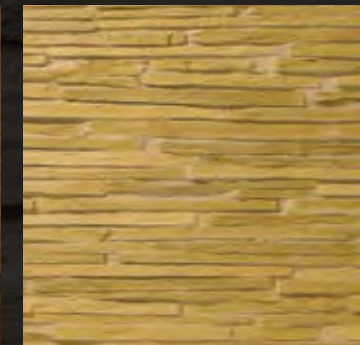
Design features using the stone panel Lajas for shop interiors and modern living spaces.





The artificial stone panel Pirenaica is highly versatile:
for a modern ambiance at home, for shop interiors, or for hotels and restaurants.

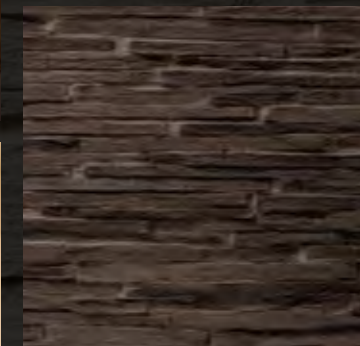
SELECTION FROM THE PRODUCT RANGE – IN STOCK



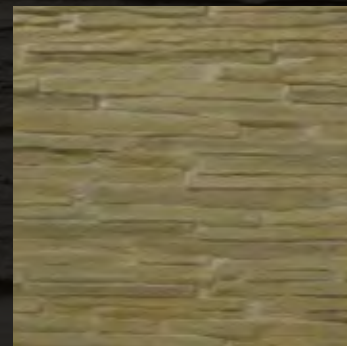
Pirenaica ocre 303



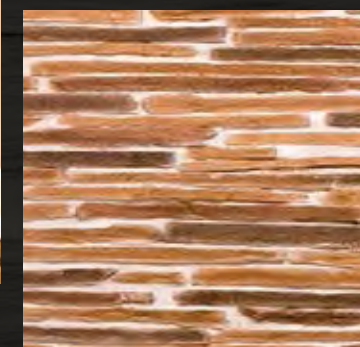
Pirenaica blanca 304



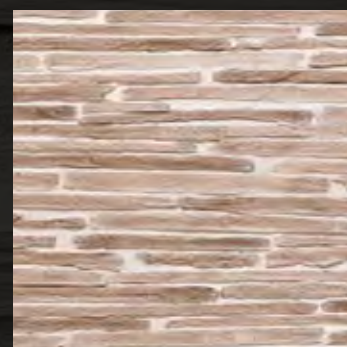
Pirenaica negra 306



Pirenaica cruda 307



Pirenaica marron 323



Pirenaica anthracite 324

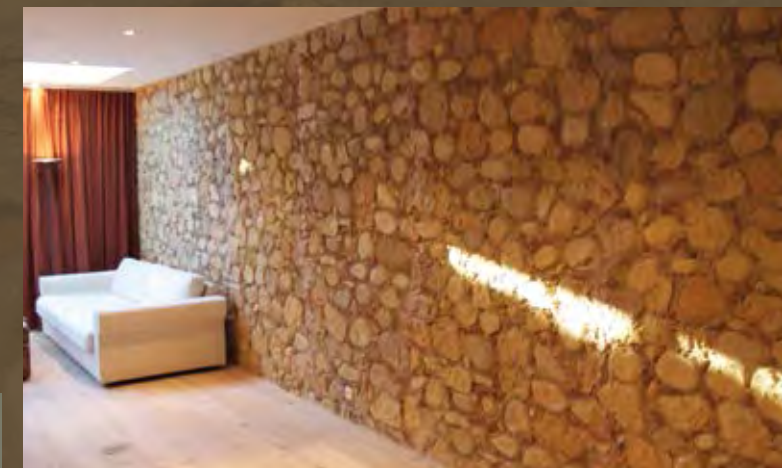


A FEEL-GOOD AMBIANCE IN BEAUTIFUL SURROUNDINGS

Our MSD stone panels are highly versatile. They create a unique ambiance your guests will never forget.

Stone panels can be used as eye-catchers in commercial surroundings, or create a cosy ambiance at home or in hotels and restaurants.

An expertly matched lighting concept will help heighten the desired ambiance, as the stone panels will create light and shadow effects.





Due to their extraordinary flexibility, our stone panels are perfect for decorating curved wall areas. Please view our image gallery online for more examples.

www.stoneslikestones.eu/steinpaneele/galerie_rundbau.html



A FRESH LOOK FOR YOUR BUSINESS

Sales environments rely on customised interiors more than ever. MSD stone panels will set you apart from the competition and will have your customers wanting to stay. With our products, you are guaranteed a memorable look that will support the recognition of your brand. The same principles apply for trade fair stand construction. MSD stone panels will always have that head-turning effect.





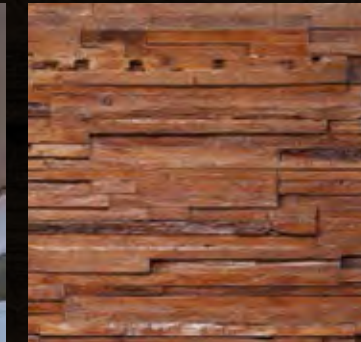
PLYWOOD AND DUELAS – THE PERFECT TIMBERED LOOK FOR LARGE AREAS

Plywood and Duelas are the ideal panels medium to cover large wall areas with a timber look in record time.

The authentic wood character is reflected in the surface structure, which is a 100% imprint of the original.



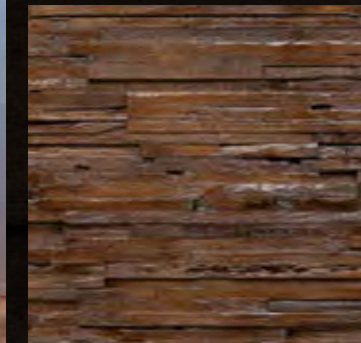
SELECTION FROM THE PRODUCT RANGE – IN STOCK



Plywood avellana 401



Plywood marron 404



Plywood nogal 408



Plywood pino 406



Duelas anthracita 422



Duelas blanca 420

Accent Panels

3D SURFACE



ACCENT PANELS: INNOVATIVE ROOM DESIGN IN 3D

Accent panels are manufactured from fibreboard with a medium thickness. They create an optical illusion of movement, and are available as mezzo-rilievo milled panels with a thickness of up to 19 mm.

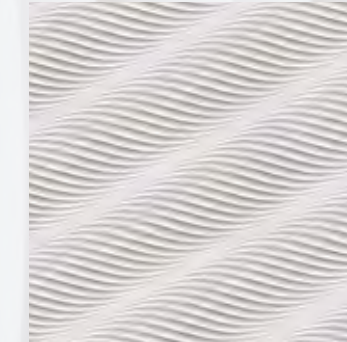
The 3D surface of the accent panel creates vivid contrasts of light and shadow.

Depending on the angle of light, rooms are enriched with interesting shadow-play.

ADVANTAGES AT A GLANCE:

- large-area wall and ceiling panels milled from MDF for shop interiors, trade fair stands, restaurants and hotels
- The product comes with a standard white primer finish and can be painted individually
- large-area panels up to 2.44 x 1.22 m (2.98 m²) for fast installation
- most designs are available immediately

SELECTION FROM THE PRODUCT RANGE – IN STOCK



Wave 5002



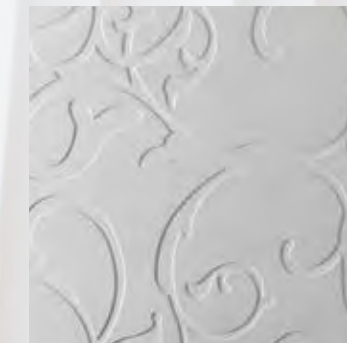
Ribbon 5003



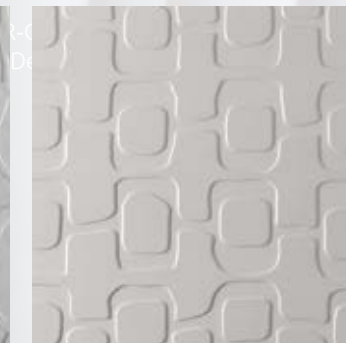
Beach 5004



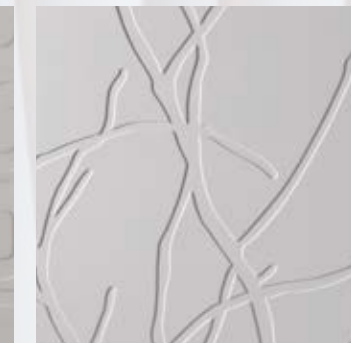
Wild 5007



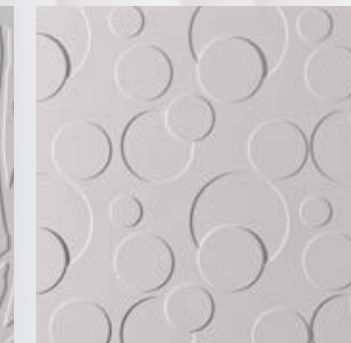
Flower 5009



Pop Art 5010



Forest 5012



Big Dot 5013



Crystal 5014



Canyon 5015



Ocean 5016



Rokoko 5017

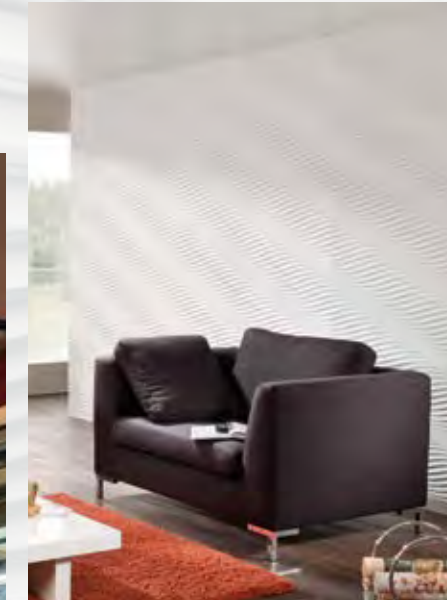
Use the QR code to view the overview of all our design patterns:
www.akzentpaneel.de/3d-paneel_muster.html





AMBIANCE WITH CHARACTER

The 3D milled wave-form accent panels Canyon and Wave transform every space into something memorable.



ACCENT PANELS FOR A DISTINCTIVE AND MEMORABLE INTERIOR

Our easy to install accent panels are the epitome of modern design, and create clear lines for wall or furniture elements, sliding doors, room dividers, headboards, and much more. They are suitable for universal use and highly flexible in terms of colour designs for innovative shop interiors or trade fair stands, or for eye-catching accents in hotels and restaurants, doctor's offices, or private living environments.



TOP Restaurant feature wall with accent panel 5004 Old Timber print
BOTTOM Accent panel 5009 with gold leaf finish
LEFT Shop rear wall with NOKIA accent panel 5004

PROFILINE PANELS – MAXIMISED DESIGN FLEXIBILITY

ProfiLine panels come in a great variety of innovative patterns. They are premium quality and feature furniture quality milling. These panels are mainly used for large area objects and are manufactured to order. The surface of the panel comes with a primer film for colour coating.

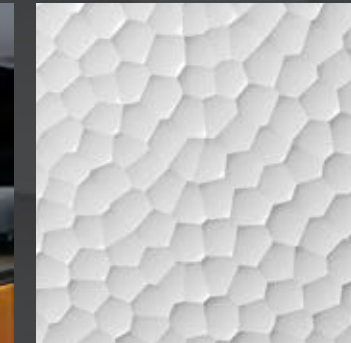
Panel dimensions: 1.20 x 2.40 m



ProfiLine 6024



ProfiLine 6004



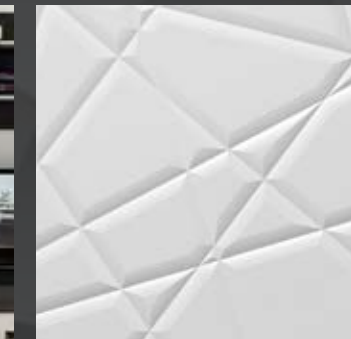
ProfiLine 6004



ProfiLine 6006



ProfiLine 6022



ProfiLine 6008



ProfiLine 6022



ProfiLine 6026



ProfiLine 6024



ProfiLine 6026

SELECTION FROM THE PRODUCT RANGE – ON ORDER

Use the QR code to view the overview of all our design patterns
Accent Panels – ProfiLine:
www.akzentpaneel.de/3d-paneel_muster_profiline.html



MODULOFORM – ATTRACTIVE CUSTOM SOLUTIONS

The open panels are suitable for use as furniture fronts, wall panels, room dividers, or radiator covers. The primer film is deep-drawn onto the panels, creating an excellent quality finish. Our team will be happy to help with additional information.

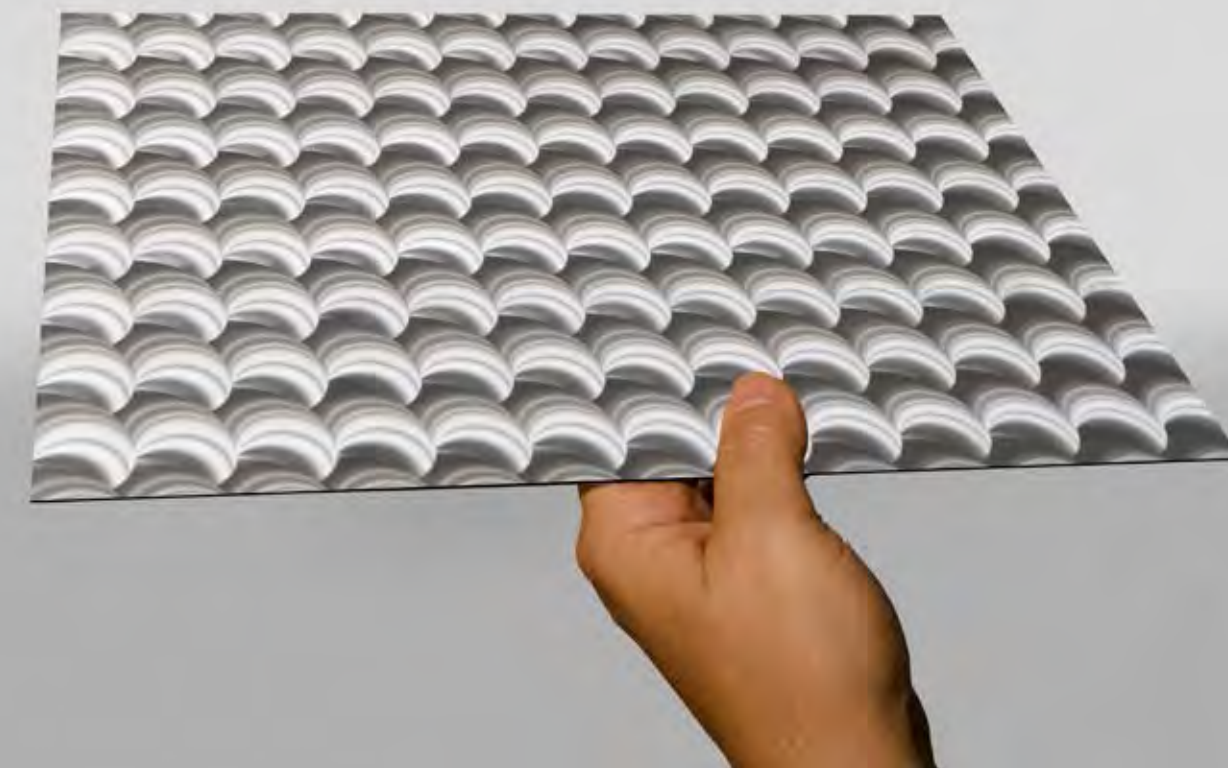
Max. panel dimensions: 1.20 x 2.50 m



Two examples from our radiator cover range

Alox

ALUMINIUM MILLED SHAPES





ALROX – SOPHISTICATED MILLED SHAPES

Alrox aluminium panels offer the perfect wall panel for a variety of applications: Elevators, shop interiors, furniture panelling, bathroom interiors, or as an advertising panel complete with personalised logo.

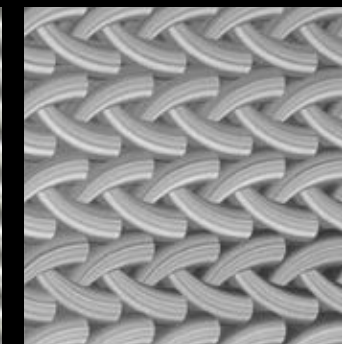
ADVANTAGES AT A GLANCE:

- Alrox is based on aluminium 1050 or 5005 with a material thickness of 1 mm. We furthermore offer AISI 304 or 316 stainless steel with a material thickness of 0.8 mm. Other materials (e.g. brass) available on request.
- numerous design variations available in various sizes
- Alrox opens up a whole new world of creativity for cabinet makers, metalworkers, and interior designers.
- The standard Alrox panel size is 2500 x 1250 mm. Other formats available on request (1000 x 2000 mm, 1500 x 3000 mm, up to 2000 x 6000 mm).
- Optional transparent varnish, primer film, or galvanisation helps protect the design profile from dust accumulation and oxidation.

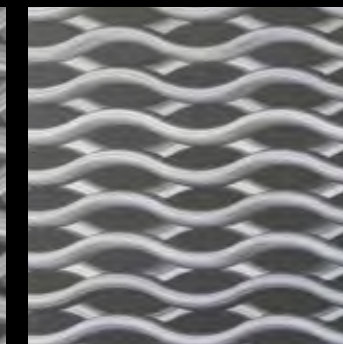
SELECTION FROM THE PRODUCT RANGE – ON ORDER



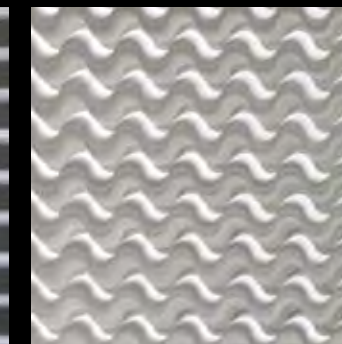
AL 01 – 60F



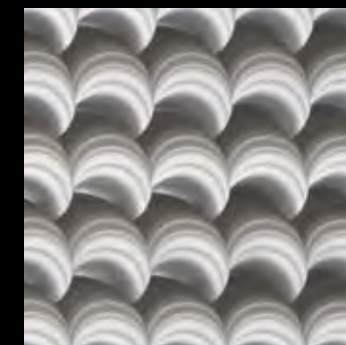
AL 03 – 60F



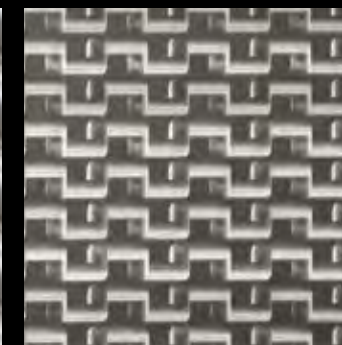
AL 05 – 30F



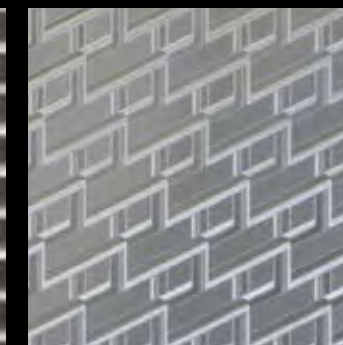
AL 06 – 60F



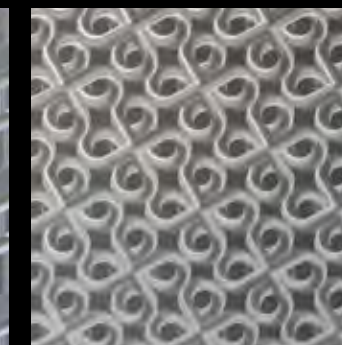
AL 07 – 125F



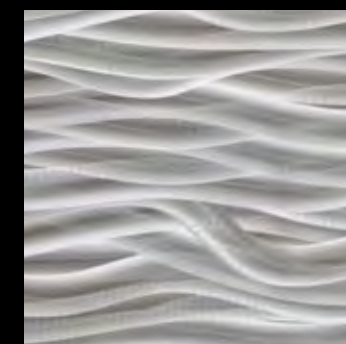
AL 08 – 30F



AL 10 – 25F



AL 11 – 25F



AL 13 – 60F



AL 20 – 60F



AL 24 – 60F



AL 27 – 100

Use the QR code to visit the
www.alrox.eu homepage



Thin Slate

NATURAL SLATE VENEER



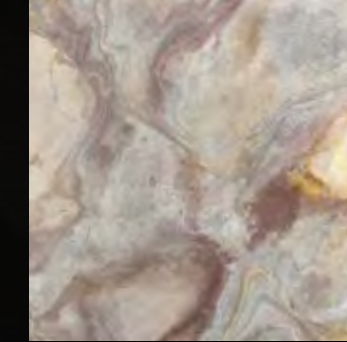
THIN SLATE – A UNIQUE MATERIAL WITH CHARACTER

Our thin slate products are manufactured from genuine natural slate and create a very natural effect wherever they are used: As wall covering or furniture front, in bathrooms, shower cubicles or on balconies, as a feature wall around a fireplace, on door frames or for decorative features in hotels, lobbies and bars – thin slate veneers have an unmistakeably classy and timeless character.

ADVANTAGES AT A GLANCE:

- Thin slate products are manufactured from solid slate
- they are lightweight, flexible, and mounted on GRP
- Looks and feels like solid slate
- minimal structural height (layer thickness approx. 1.5 mm)
- every panel is completely unique
- can be glued onto virtually any medium, including tiles, glass, wood, stone, metal, plasterboard
- various panel sizes from 1.22 x 0.61 m to 2.80 x 1.45 m
- various colours/surface structures available in stock

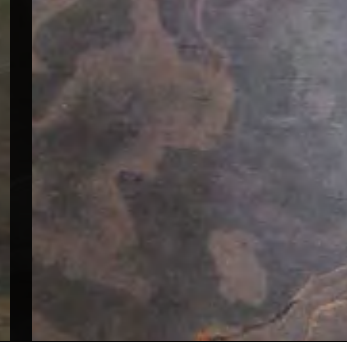
SELECTION FROM THE PRODUCT RANGE – IN STOCK



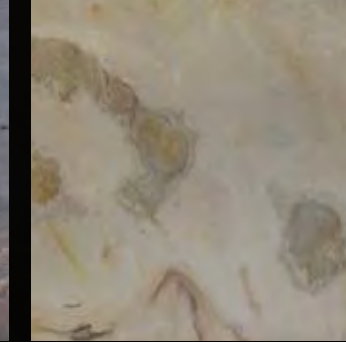
Blanco LB 1000



California Gold LB 1100



Arcobaleno Colore LB 1200



Falling Leaves LB 1300



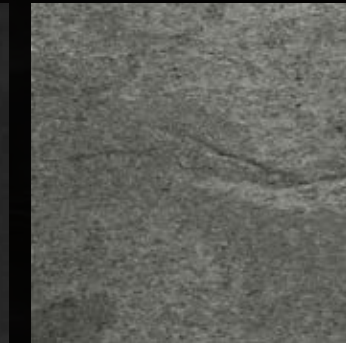
Rustikal LB 1600



Molto Rosa LB 1500



Negro LB 1900



Argento LG 2000



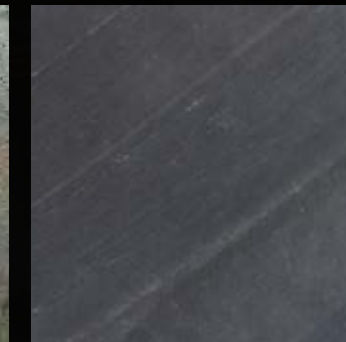
Burning Forest LG 2150



Cobre New LG 2300



Verde Gris LG 2700



Deep Black LG 2800

Use the QR code to view our image gallery Stone veneers:
www.duennschiefer.de/steinfurnier_bildergalerie.html





WAFFER-THIN SLATE – ENDLESS POSSIBILITIES

Our thin slate products leave a lasting and high quality impression. Their use is virtually unlimited:
In bathrooms (tilers), as wall covering (painters), or for furniture and doors (carpenters) – thin slate can be used
in most finishing trades quickly and easily.



Use the QR code to view the overview of all our design patterns Glimmer Slate:
www.duennschiefer.de/steinfurnier_glimmerschiefer.html



Lamistone

ARTIFICIAL STONE PANEL





LAMISTONE – INNOVATIVE LOOK AND FEEL

Lamistone® is a wall covering suitable for interior and exterior use. Its easy installation on smooth, uneven, and curved surfaces, including archways or pillars allows fast and clean work.

All you need to attach the Lamistone panels on brickwork, timber, MDF, chipboard, concrete, glass, metal, stucco, and more is the mounting glue that comes with the product. As no machinery is needed for installation, work is quick and uncomplicated – all you need is a carpet knife for cutting. The materials used in the production of Lamistone make it very eco-friendly. There is hardly any waste, and its low weight and volume keep the carbon footprint for transport low.

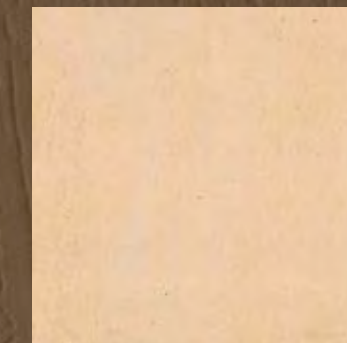
ADVANTAGES AT A GLANCE:

- Machine-manufactured artificial stone panel with lasting quality
- odour-neutral and eco-friendly
- breathable, fire-proof and scratch resistant
- can be installed on virtually any solid surface
- pre-died
- easy to portion and cut with just a carpet knife
- no more priming or painting of walls and ceilings
- practical packaging: 18 panels of 38 x 58 cm (3.96 m²)



Lamistone in a restaurant bathroom

SELECTION FROM THE PRODUCT RANGE – IN STOCK



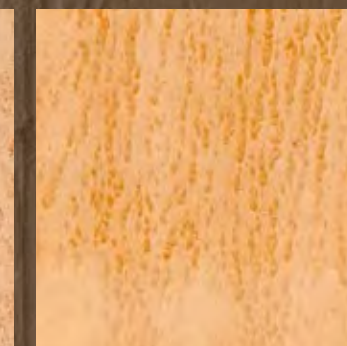
Lamistone 11 Pure



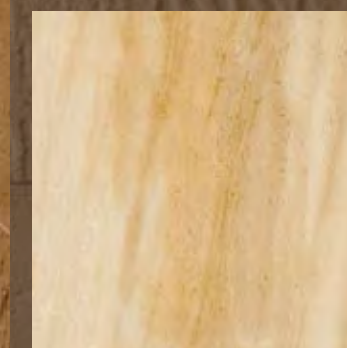
Lamistone 12 Pure c



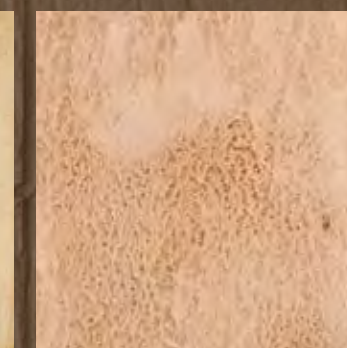
Lamistone 21 Core



Lamistone 31 Luna



Lamistone 32 Dune

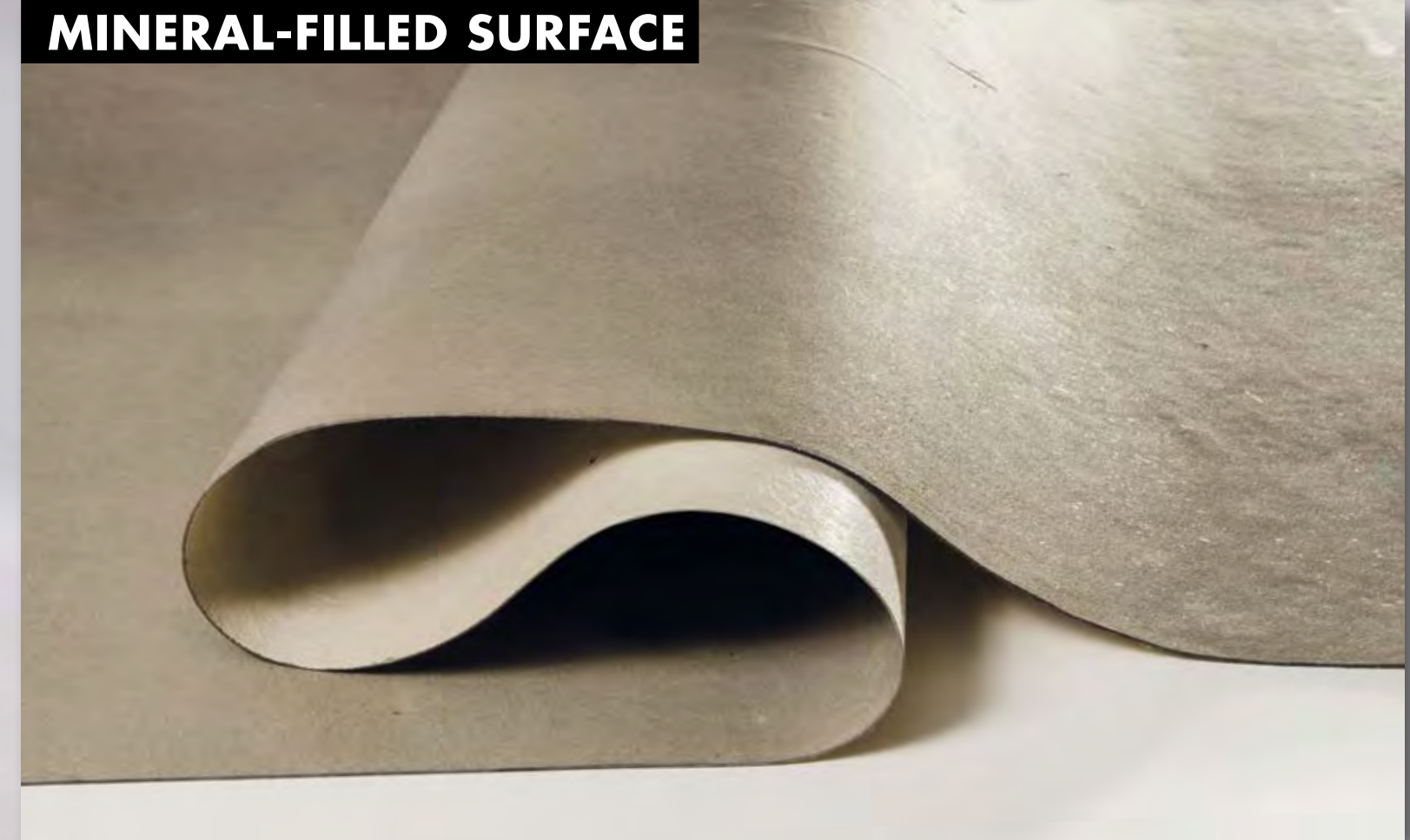


Lamistone 33 Sena



RollBeton

MINERAL-FILLED SURFACE





ROLLBETON/ROLLROST: TRENDY AND MINIMALIST SURFACES

Our RollBeton/RollRost surfaces create trendy accents for fashionably minimalist surroundings. RollBeton products are manufactured with stone meal and a resin binder – giving the product its authentic look and feel.

RollRost products are mineral-filled, resin-bound surfaces with veneer thickness, creating a look of rusted iron.

Creating design accents with RollBeton in living spaces has become just as accepted as its use in hotels and restaurants, and for shop and trade fair interiors.

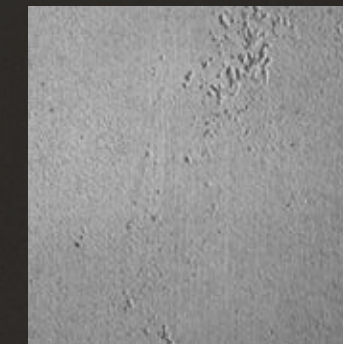
The material is pliable and comes on a roll. These products are completely odour-neutral.

ADVANTAGES AT A GLANCE:

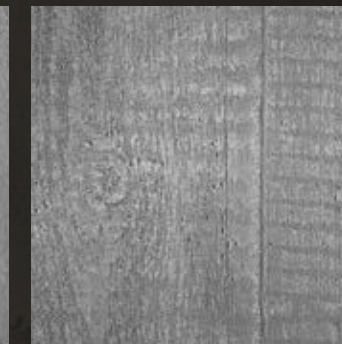
- RollBeton and RollRost are delivered on a fibre mat substrate
- easy to work with: all you need is a carpet knife for cutting
- depending on the intended substrate, surfaces can be easily sprayed with an appropriate spray glue
- Surfaces can be repatinated at any time
- extremely lightweight – one roll weighs just 15 kg and holds 3.00 x 1.00 m
- No separate construction permit required: safe in terms of statics



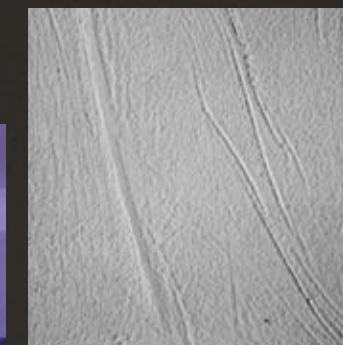
SELECTION FROM THE PRODUCT RANGE – ON ORDER



RollBeton smooth



RollBeton formwork look



RollBeton wild



RollBeton with nozzle



Use the QR code to visit the
www.rollbeton.de homepage



RollRost

FLEXIBLE ROST IN SIZE OF VERNEER

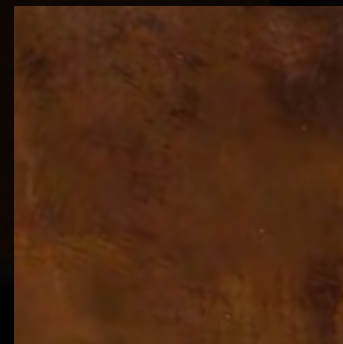




ROLLROST – ON ORDER



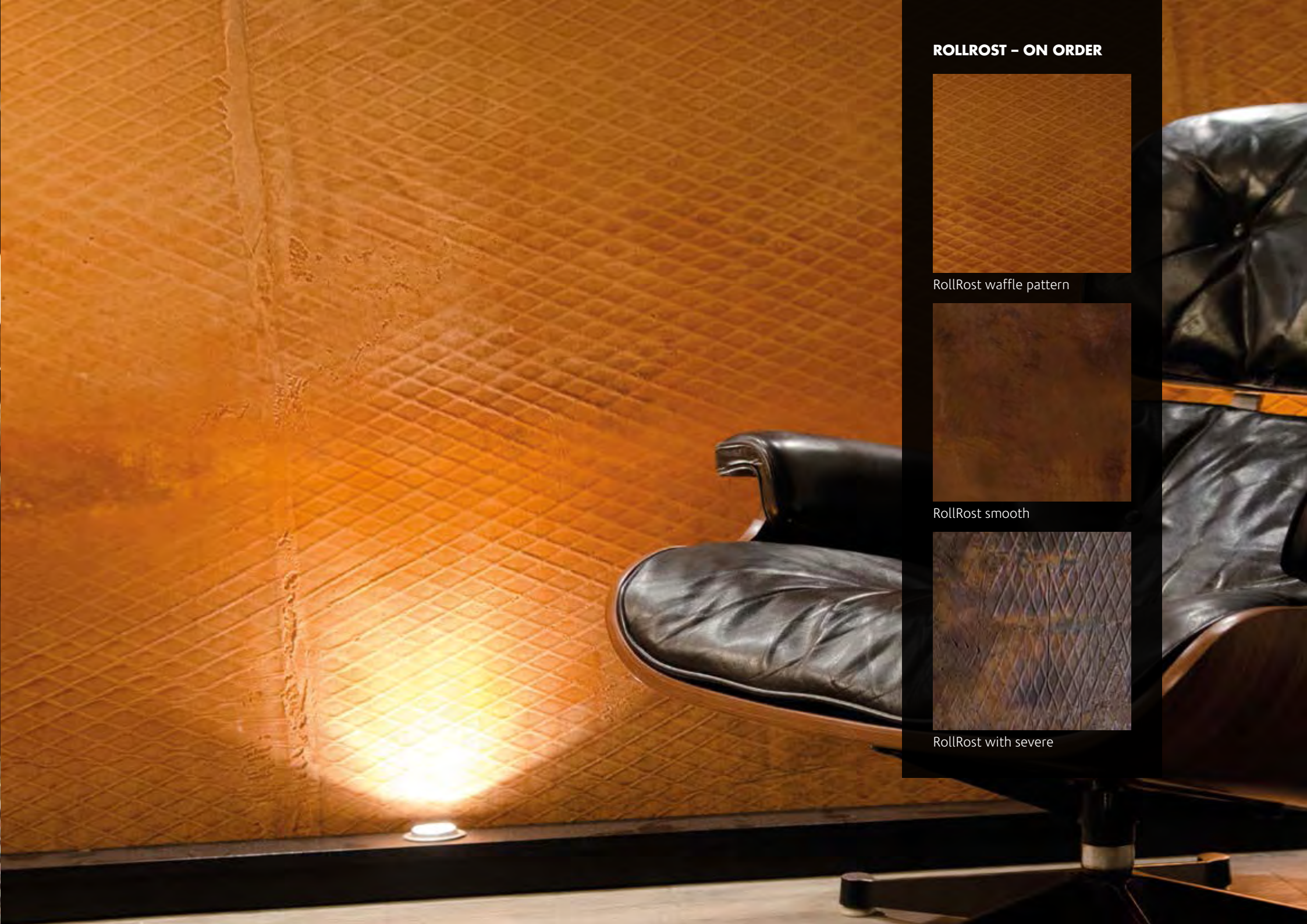
RollRost waffle pattern



RollRost smooth



RollRost with severe



RollSand

COLORED SAND ON TEXTURE



ROLLSAND – THE PERFECT MATERIAL FOR AN EXCEPTIONAL AMBIANCE

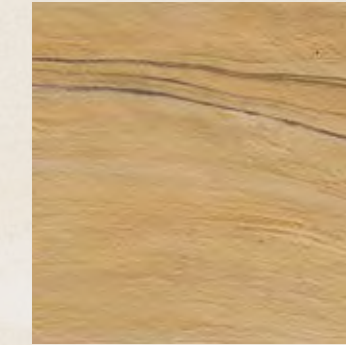
Our RollSand surfaces reflect the latest trends in modern interior design. Their surfaces offer a natural look and feel, and radiate style and good taste.

RollSand is manufactured with extra-fine quartz sand types. The manufacturing process is completed by hand, which means that each roll is entirely unique. The process allows for the representation of a variety of colours and textures for trendy interiors. RollSand is perfect for use on walls, but also for counters and many other surfaces.

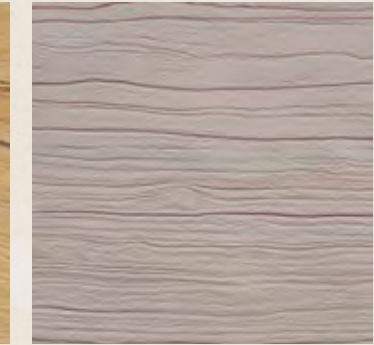
ADVANTAGES AT A GLANCE:

- RollSand is manufactured from many different quartz sand types
- the very flexible material is easily applied to curved as well as straight surfaces
- RollSand is made by hand, which makes each individual roll absolutely unique
- Material thickness 2-3 mm
- easy to use and cut – all you need is a carpet knife; perfect over edges and corners, as furniture veneer, for counters, behind glass, and much more
- depending on the intended surface to cover, an appropriate spray glue or the mineral glue provided with the roll will suffice for mounting the RollSand panel
- Size: 2.73 x 1.10 m

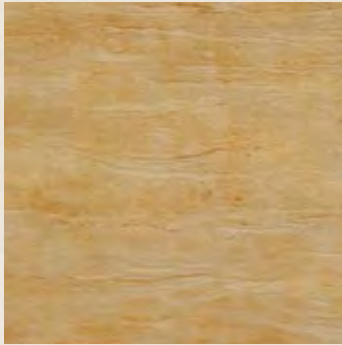
SELECTION FROM THE PRODUCT RANGE – ON ORDER



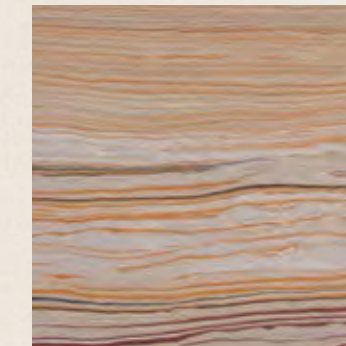
RollSand Decor 036



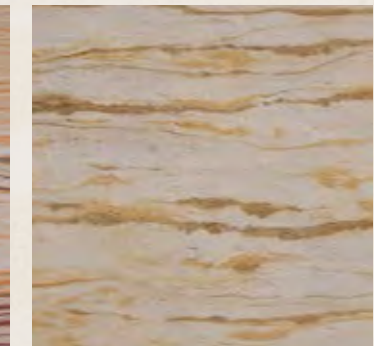
RollSand Decor 003



RollSand Decor 004



RollSand Decor 405



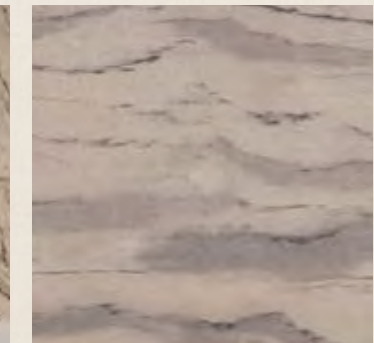
RollSand Decor 007



RollSand Decor 040



RollSand-roll



RollSand Decor 107



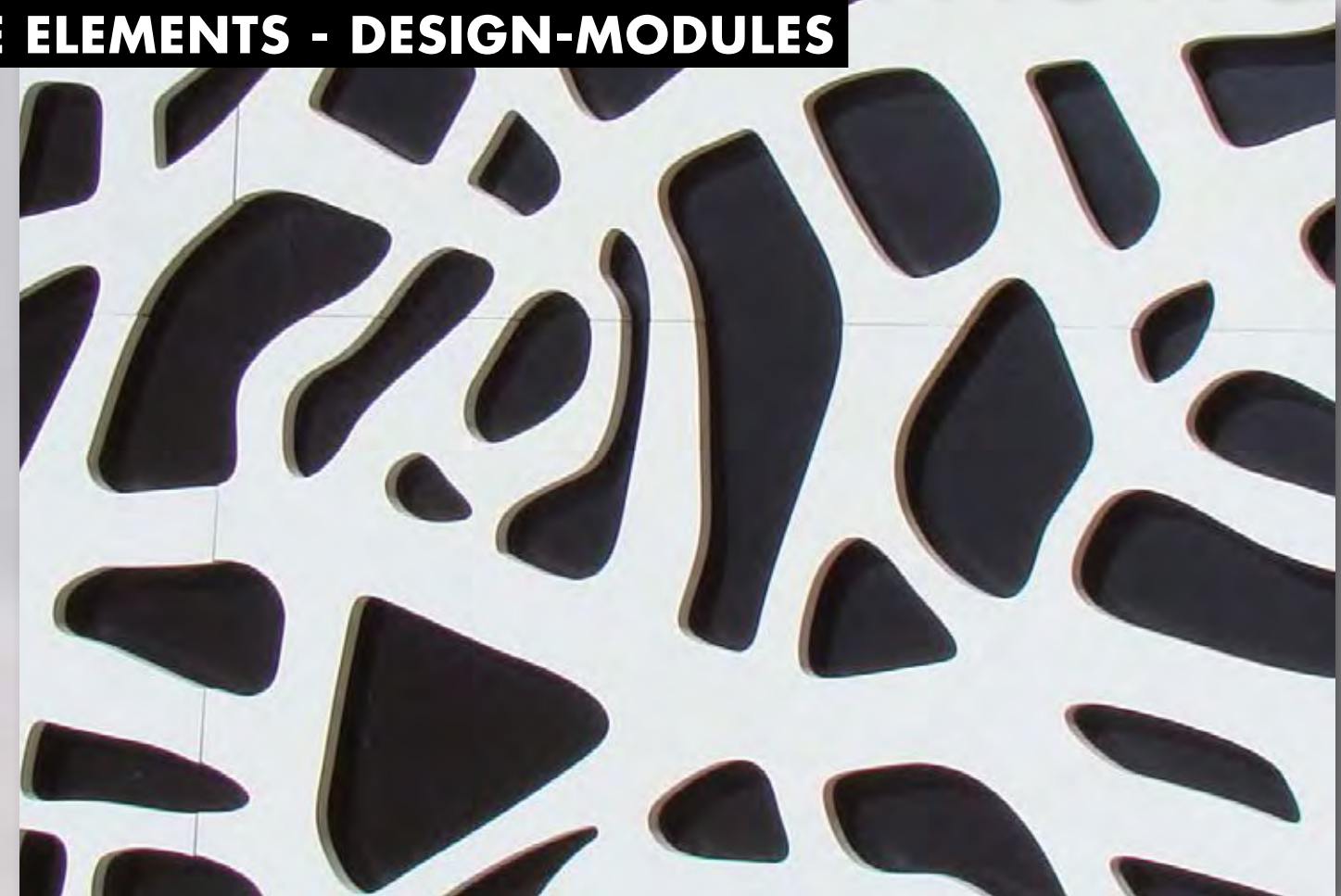
RollSand Decor 018

Use the QR code to visit the
www.rollsand.de homepage



Duralmond

LATTICE ELEMENTS - DESIGN-MODULES





DURALMOND – CREATIVITY WITHOUT LIMITS

The Duralmond elements come in a wide variety of profiles, with the Textura series enchanting the viewer with authentic representations of wood, leather, and stone surfaces. Duralmond is a two-component material: milled almond shell and resin.

Combined, these materials create a pliable mass from which our various design elements are shaped.

The elements are perfect for use in wall and ceiling designs, and come in a broad spectrum of 3D surfaces spanning the entire range from modern to traditional architectural styles. The materials used for the manufacture of Duralmond make it perfect for interior as well as exterior applications.

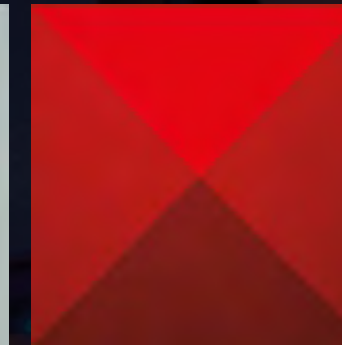
ADVANTAGES AT A GLANCE:

- next generation panels for walls and ceilings
- lighter than wood
- the almond shells make this a very eco-friendly product – there is no need for cutting down trees
- available in all RAL and NCS colours

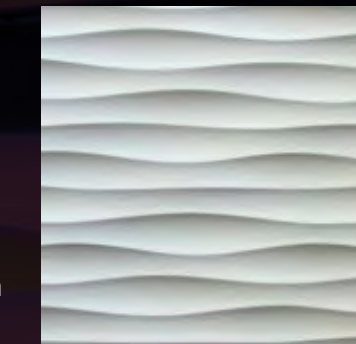
SELECTION FROM THE PRODUCT RANGE – ON ORDER



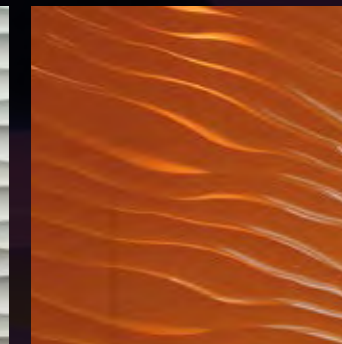
Nipon



Diamante



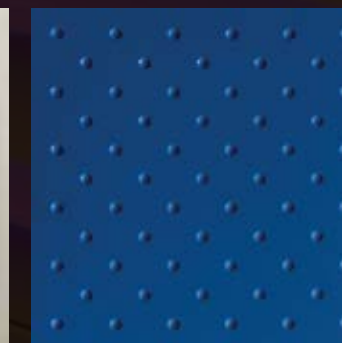
Skyway



Duna



Padded



Golfin

Use the QR code to visit the samples page:
www.duralmond.de/paneele.html



DURALMOND CELOSIAS: MODERN DESIGN INSIDE AND OUT

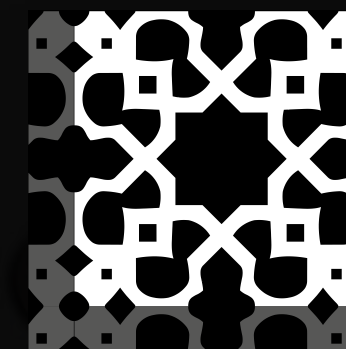
Our lattice elements are an innovation in modern design. The base material is a wood and fibre mix, and can be used for interior or exterior applications. Each module comes with an all-round primer coating or varnish finish in white.

The waterproof varnish means that the lattice elements can be used for deco accents on external façades, as well as for room dividers, or for window, ceiling or wall decoration.

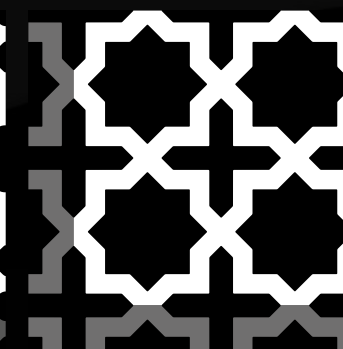


Façade – Partially covered with Organica 04

SELECTION FROM THE PRODUCT RANGE – ON ORDER



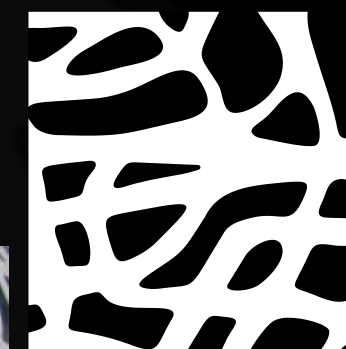
Celosia Clasica 01



Celosia Clasica 03



Celosia Ojival 01



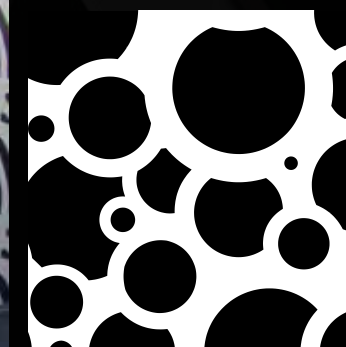
Celosia Organica 01



Celosia Organica 04



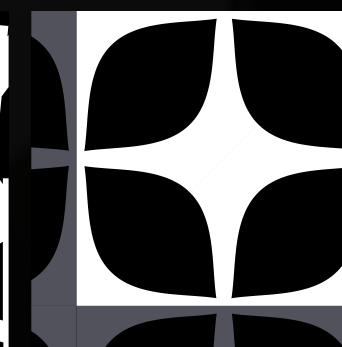
Celosia Ornamental 03



Celosia Pop 03



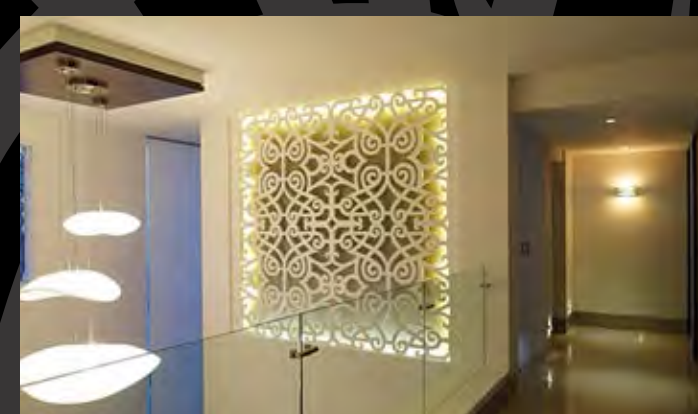
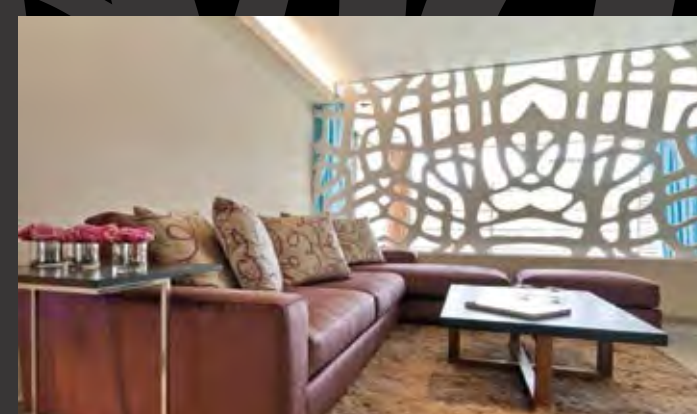
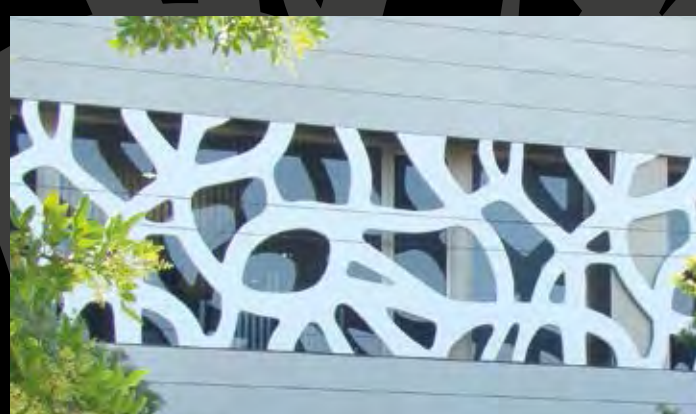
Celosia Urban 01



Celosia Urban 04

Use the QR code to visit the samples page:
www.duralmond.de/celosias.html

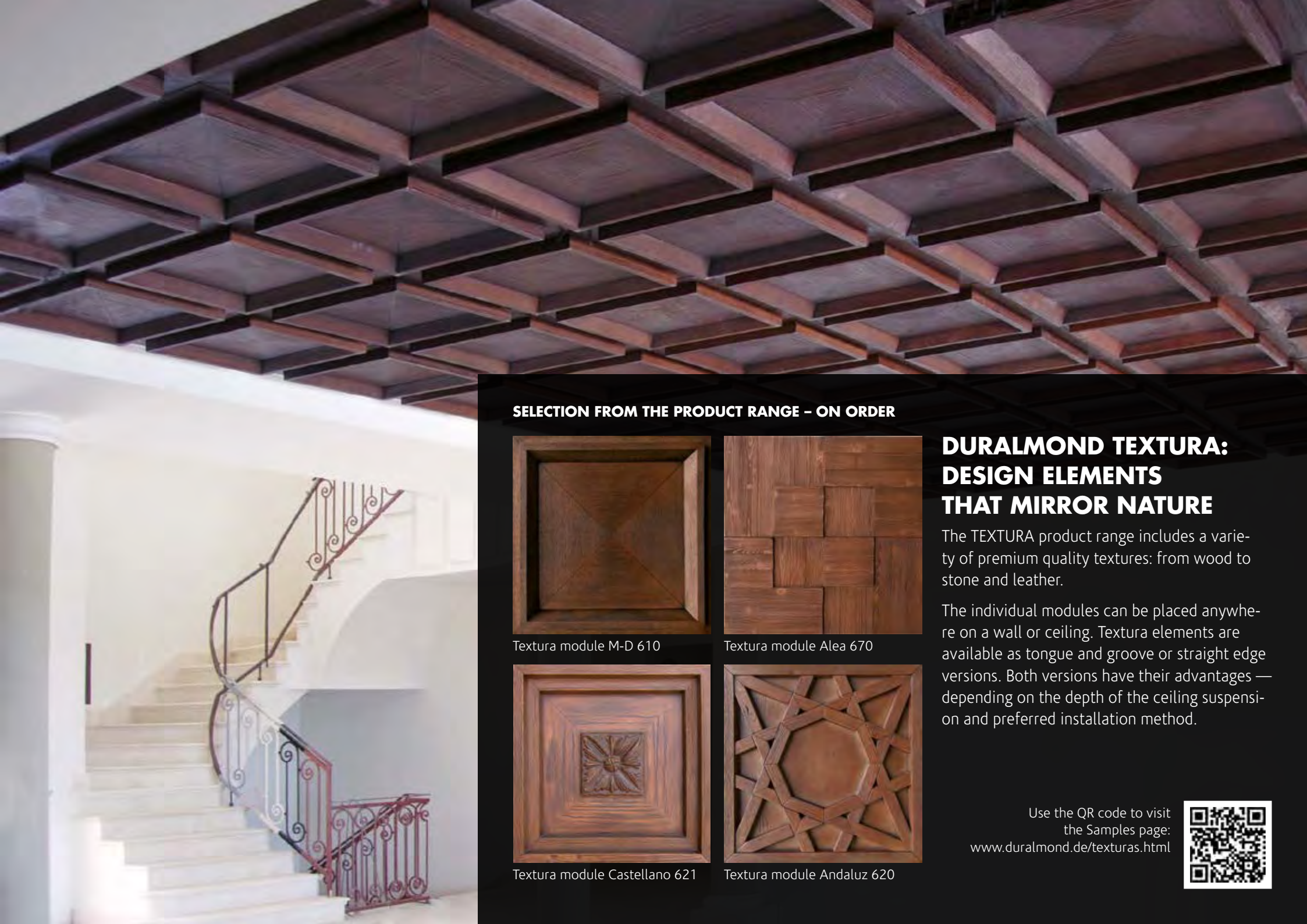




The Duralmond CELIOSAS collection features large area elements for use in interior design or on façades.

The latticework can be used to divide spaces, or to decorate wall, ceiling, or counter areas.

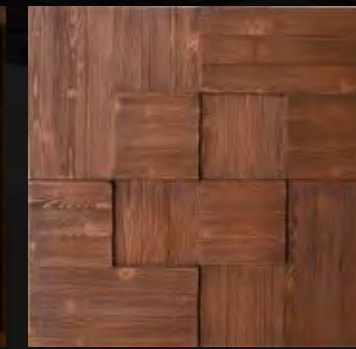
They come in a large variety of designs and in two material versions.
For more references please visit www.duralmond.de



SELECTION FROM THE PRODUCT RANGE – ON ORDER



Textura module M-D 610



Textura module Alea 670



Textura module Castellano 621



Textura module Andaluz 620

DURALMOND TEXTURA: DESIGN ELEMENTS THAT MIRROR NATURE

The TEXTURA product range includes a variety of premium quality textures: from wood to stone and leather.

The individual modules can be placed anywhere on a wall or ceiling. Textura elements are available as tongue and groove or straight edge versions. Both versions have their advantages — depending on the depth of the ceiling suspension and preferred installation method.

Use the QR code to visit
the Samples page:
www.duralmond.de/texturas.html



Used Timber Look

USED TIMBER ON WOOD



**USED TIMBER
ON DIBOND**





Used timber designs for shop interiors with a wide variety of applications: Individual boards, shelf units, decorative walls,



plus all kinds of other objects as backdrops for goods. Visit www.altholz-design.eu for more examples and ideas.



A specialist treatment recreates the natural affects of old, weathered, and sun-bleached timber.

SELECTION FROM THE PRODUCT RANGE – ON ORDER

USED TIMBER LOOK – AS FASCINATING AS THE REAL THING

Our used timber products are an innovative, natural and affordable alternative to traditional used timber boards. The reuse of timber previously used in construction – so called used timber – has developed into a popular trend in interior decorating over the past years.

However, the availability of “natural” used timber is limited, and what is available may not be in the quality, colour, or texture you seek.

ADVANTAGES AT A GLANCE:

- no “misfits” tending towards too light or grey in colouring, and yet: every board is unique!
- more fire-resistant than raw timber
- easy and simple cleaning with traditional means like window cleaner, vinegar, etc.



AH 100 Fichte Tirol grau



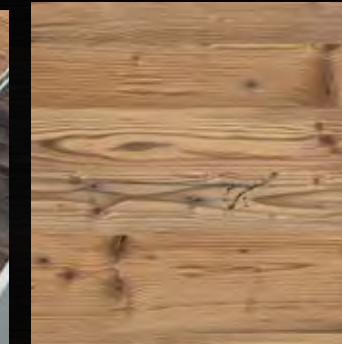
AH 120 Country Pine



AH 130 Lärche rustikal



AH 140 Tirol



AH 150 Fichte natur



Mosaic Wood

NATURAL WOOD FROM OFFCUTS





MOSAIC WOOD: FOR THAT EXTRA SPECIAL AMBIANCE

Mosaic wood exudes warmth and timeless comfort.

A completely natural and health-promoting material, unmistakable in its structure and colour that suits any environment due to its unrivalled versatility.

Mosaic wood combines perfectly with numerous materials, including stone flooring, plastered walls, or glass fronts.

The products are manufactured from teakwood in various depths, creating exciting, exotic, and timeless wall areas.

Mosaic wood is a completely natural product manufactured from offcuts of the furniture industry.



The underside is lined with either netting fabric or plywood for easy installation.



NEW

FreeStylePanels

**THE LIGHT-WEIGHT
WALL COVERING**





NEW

FreeStylePanels for a Stylish Ambiance

On offer are trendy designs with metallic or varnished surfaces, and also with a leather-type look and feel.

The panels are manufactured in a thermoplastic process and have a mounting core, which is glued or screwed to the wall as a first step. The actual front of the panel is then simply mounted and fixed. The wall can be designed individually, using a mix of panel models.

The panels are waterproof, impact resistant and flexible.

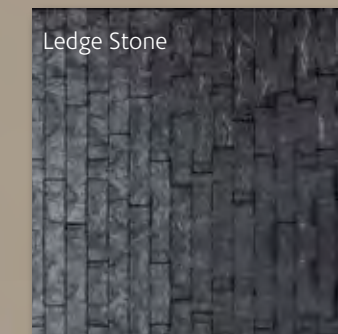
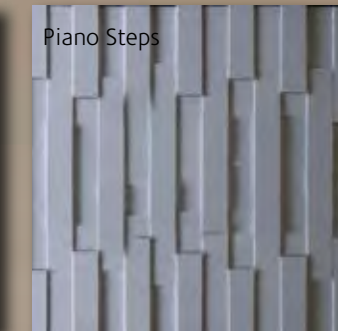
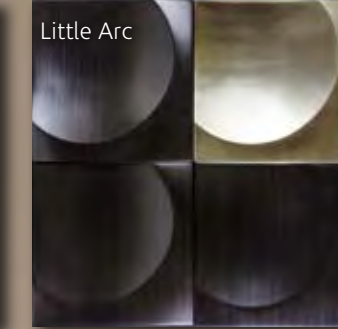
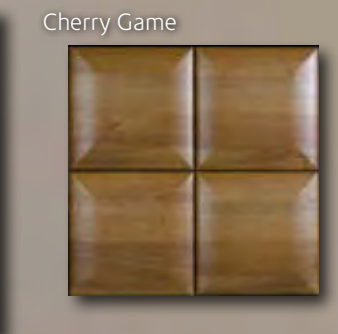
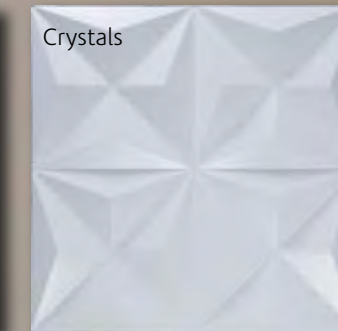
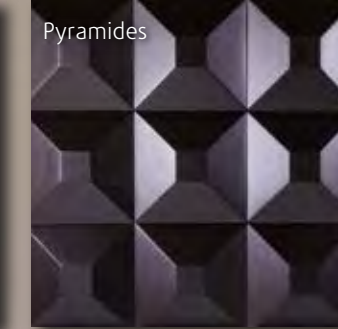
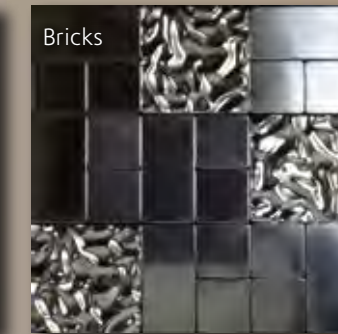
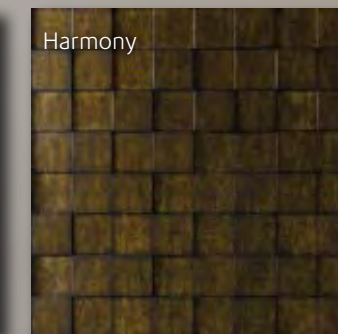
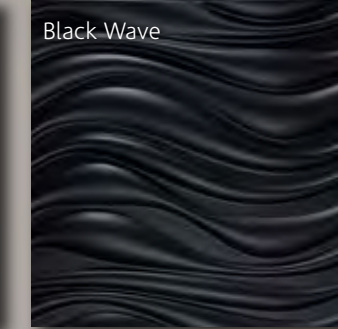
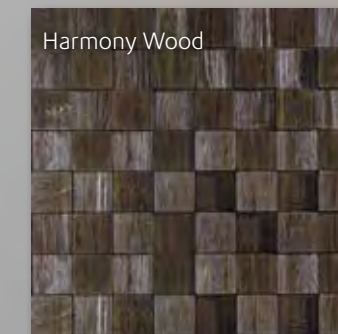
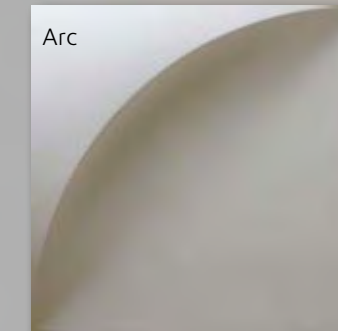
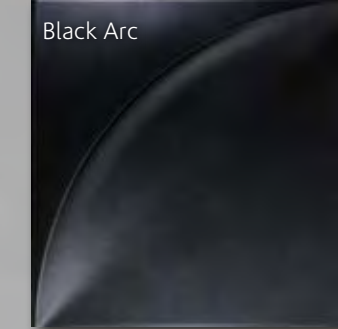
The light-weight, yet very strong panels are just 1 mm thick, and are manufactured from up to 40% recycled material.

They are fully compliant with the fire safety standards ASTM E84 and EN 13823.

Almost all of the panel models come in a 60 x 60 cm size, while some models (e.g. Cherry Game) come in the size 23 x 23 cm.

Please ask for dimensions before placing your order.

SELECTION FROM THE PRODUCT RANGE – IN STOCK



NEW

Application

Our FreeStylePanels are much sought after by architects, contractors, interior design companies for the hospitality sector, and also private individuals. The very easy installation of the panels is an important consideration when designing wall areas.

The quick, low-noise, and clean installation of the panels can be undertaken without any interruption of business. The panel is primarily used for interiors.

They are typically used for eye-catching accents in lobbies, hallways, and shop interiors, as well as in bars, clubs, and discotheques, and even in private living environments.

Patents

The manufacturing process is protected by patent. The panels are fully compliant with the US standard ASTM E84 and the EU standard EN 1313823 for fire safety.

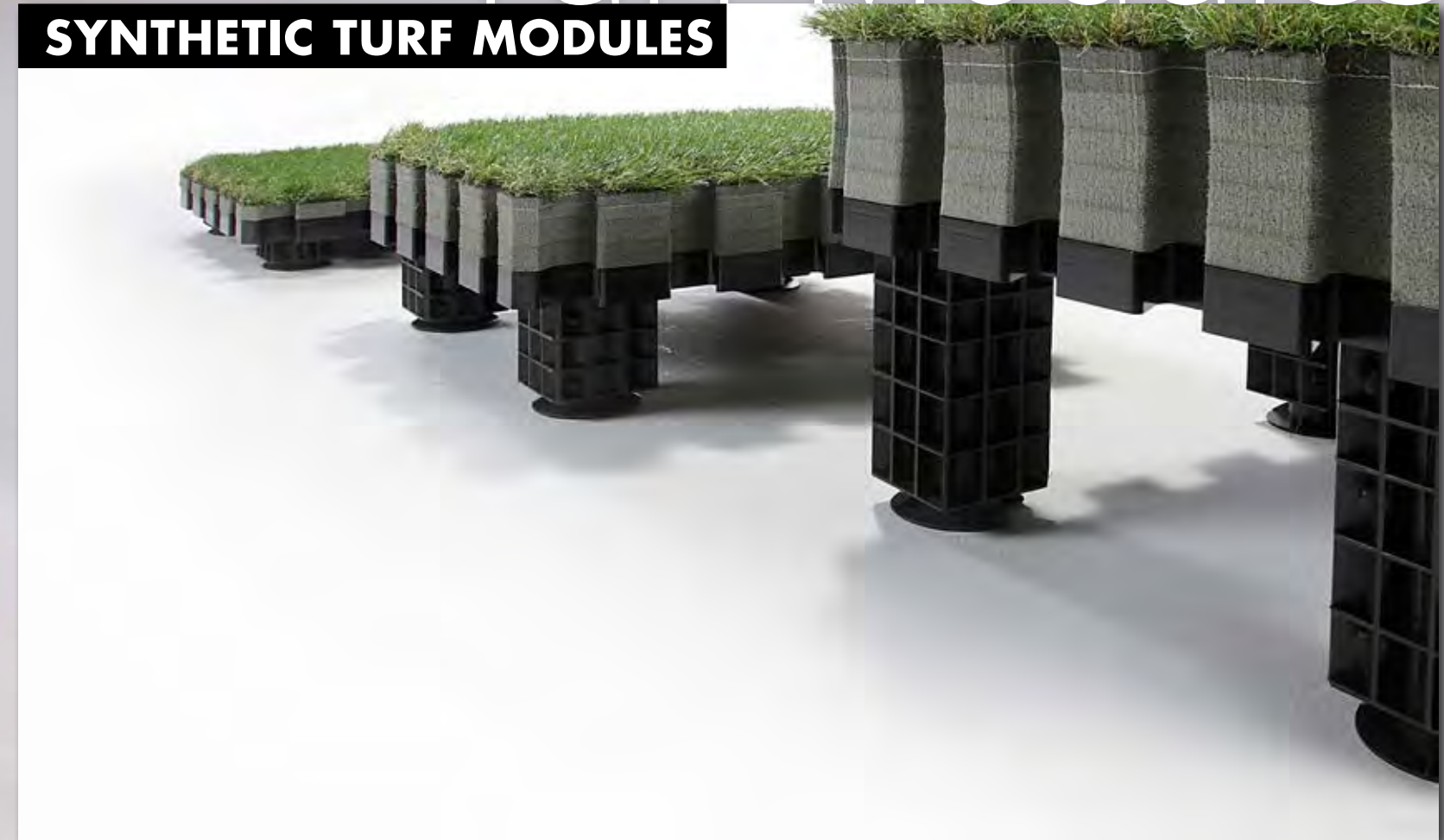


Bottom of a Freestyle panel. Even with mounting core bonded (White Mounting adhesive).

NEW

Turf Modules

SYNTHETIC TURF MODULES



Benefits at a glance

- ◆ Endless modular system
- ◆ Easy-to-handle elements (530x 530 mm)
- ◆ Dry construction
- ◆ Modules can be replaced easily
- ◆ Great walking comfort
- ◆ Perfect heat insulation
- ◆ Acoustic insulation
- ◆ UV-resistant
- ◆ Minimum of maintenance required
- ◆ Height-adjustable bases
- ◆ Mechanical strength and stable structure
- ◆ Resistant against environmental effects
- ◆ No need for watering
- ◆ Easy to dismantle

NEW

We offer the patented GrasModul Roofinggreen® for the greening of terraces and flat roofs with synthetic lawn.

By virtue of its modular structure with adjustable bases, it provides slightly raised and ventilated surfaces.

Fair stands with GrasModul surfaces

The system is predicated for temporary use at trade fairs and exhibits – also for multiple use.

The advantages are a pretty, natural appearance, easy-to-handle modules of 530 x 530 mm, quick assembly and disassembly, as well as clear space underneath the Roofinggreen® modules for cables, pipes and other supply lines.



The cost factor

- ◆ **Energy savings**
- ◆ **No watering**
- ◆ **Reusable material**

We offer attractive prices that render economic benefits in contrast to competitors with similar products.

For commercial applications, our price level permits a substantial return on investment.

In addition, only minimal maintenance costs are caused and a potential exchange of modules is quick and simple.

Heat insulation

- ◆ The GrasModul Roofinggreen® is relatively affordable compared to other methods of heat insulation.
- ◆ Depending on the insulation value, it can be qualified for subsidies in Germany.
- ◆ Low-interest loans from the KfW Bank [Development Loan Corporation]



GrasModul.de

Roofinggreen® is a ventilated, modular system for covering and making use of horizontal and vertical surfaces, and is provided with excellent insulating features and an aesthetic appearance.



NEW

MossModules

REAL MOSS FOR WALLS



NEW

MOSS-MODULES: INDIVIDUALITY AND CREATIVITY

In the Japanese Zen, moss is a symbol for peace, quiet and permanency. In Western philosophy, plants and the colour green stand for freshness, strength and renewal. The correlation of both components gave us the idea for our vertical greening systems.

We exclusively use real mosses and plants for the production of our green wall elements. Here, we ensure that the elements are easy to install and that our customers receive detailed advising.



Exhibitions

PRODUCT PRESENTATION





Modern office design – modern cabinet with matured timber design fronts and stainless steel.



With suitable lighting, the modern RollBeton concrete fully comes to show.



Exemplary room design with loose sand and DIBOND motif.

STONESLIKESTONES EXHIBIT IN ESSEN

Besides the MSD stone panel program, we present our Roll-Beton concrete and RollRost flexible grille products, as well as matured timber design, and hardwood mosaic and object design with different surfaces – and also Celosia wall elements, the ideal room partitions, can be seen at our exhibit.



TOP Here you can see a wall with mosaic wood and matured timber table.

BOTTOM Concrete floor elements



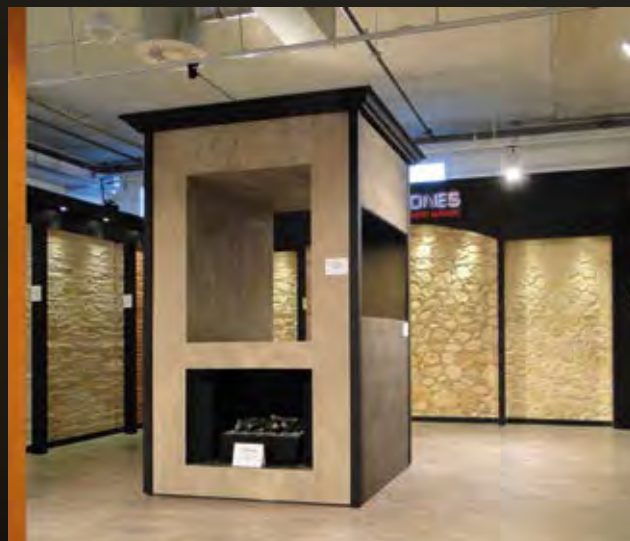
TOP The new Duelas MSD panel next to other wood design wall cladding.

BOTTOM Duralmond, thin slate and matured timber design.





Our partners demonstrate their competences with exhibits in various sizes.



Every surface on show and every demonstrated application will allow customers to better understand the nature of each product.



Once again: Lighting is an important factor. These images represent an exhibition of Ambiente Stones based in Switzerland.

EXHIBITIONS OF OUR PARTNERS

Stairwells, remodelled for an exhibition – as shown here in a small space at Deco Thome – or kitchen exhibitions will quickly convey the desired ambiance and character.

The Celiosa wall modules are an ideal solution as room dividers, as seen here at the construction samples centre of Ambiente Stones in Switzerland.



Use the QR code to view our image gallery:
www.stoneslikestones.eu/steinpaneele/galerie_ausstellung.html



WHERE DO I FIND WHAT?

For 15 years, we have been offering creative products for wall, ceiling, and object design under one roof here at StoneslikeStones.

These QR codes will allow you to visit our homepages directly using an iPad or other tablet device.



www.stoneslikestones.eu



You will find our presentations on YouTube using the search term "StoneslikeStones".

YOUTUBE VIDEO STONESLIKESTONES:

www.youtube.com/results?search_query=stoneslikestones&sm=1

MSD STONE PANELS:

www.stoneslikestones.eu/steinpaneele/kunststein_startseite.html

ACCENT PANELS:

www.stoneslikestones.eu/akzentpaneel

ALROX · PATTERNED METALL PANELS:

www.stoneslikestones.eu/alrox

THIN SLATE PANELS:

www.stoneslikestones.eu/duennschiefer

LAMISTONE PANELS:

www.lamistone.de

ROLLBETON / ROLLROST:

www.stoneslikestones.eu/rollbeton

ROLLSAND:

www.stoneslikestones.eu/rollsand

DURALMOND MODULES:

www.stoneslikestones.eu/duralmond

USED TIMBER:

www.stoneslikestones.eu/alholz-design

MOSAIC WOOD:

www.stoneslikestones.eu/mosaik-holz

DOWNLOAD

Our download pages offer further information and image material in addition to the publications show here.

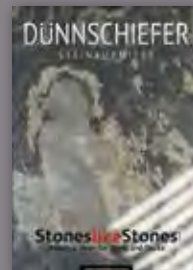
Clicking the download button will lead you directly to the PDF files on offer.



YouTube
Installation video
MSD panels



Download
Installation guide
MSD panels



ONLINE READER

StoneslikeStones offers a variety of specialist online publications for you to choose from – all of them contain interesting ideas and suggestions. We hope that our offering will spirit you away into a whole new world of design options and innovative ideas. The latest additions here are flyers for Lamistone and Roll-Beton, RollRost, and RollSand (w/o image).



www.stoneslikestones.eu/online/index.html

Have a look through our brochures and catalogues, where you will find not only all our products, but also numerous references and a detailed installation guide for MSD stone panels.



www.akzentpaneel.de/online/index.html

Let us introduce you to accent panels – here we will show you all available designs and numerous references. The accent panel ProfilLine can be found here as well – with lots of new ideas and possibilities.



www.duralmond.de/online/index.html

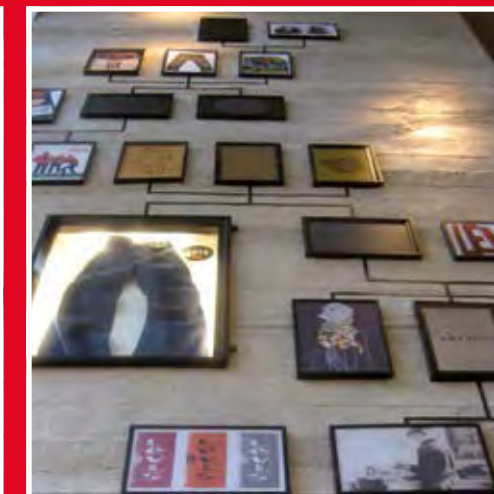
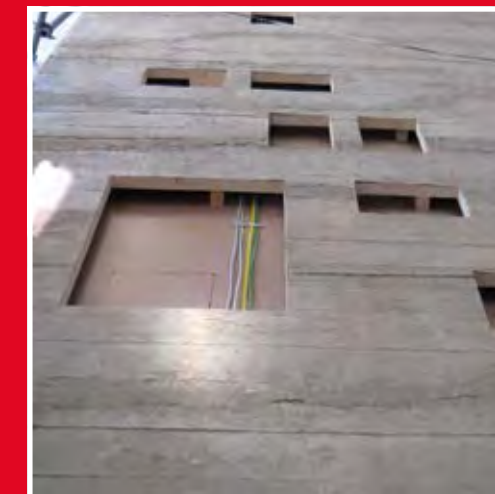
Duralmond and Celiosa design modules open up an entirely new world of design options for trade fairs, shop interiors, hotels and restaurants, as well as private living spaces.



www.duennschiefer.de/online/index.html

Here you will find the available designs of our innovative slate stone veneers in full-page images. We furthermore offer comprehensive information about thin slate as a viable alternative to slate slabs.

WALL-INSTALL
We dress your wall GmbH



Wall-Install GmbH offers an installation team of trained specialists for nationwide and international projects.

The team was trained inhouse at StoneslikeStones, and has the professional expertise and experience needed for handling any of our products.

We take on installation projects for architects, shop builders, and private individuals.

Our state of the art cutting processes at our facility help cut down installation times on site, and minimise dust development at the installation location.

We will be happy to offer advice and support during your initial planning phase regarding wall implementations, interior design, and the integration of light sources and supply lines.

WWW.WALL-INSTALL.DE

StoneslikeStones
MSD GENERAL AGENCY

D-45279 Essen-Steele · Ruhrau 41
Tel. +49(0) 201-523677-0
Fax +49(0) 201-523677-19
info@stoneslikestones.eu

stoneslikestones.eu

JAPAN

IPC LTD

2-13-12 Minamiazabu, Minatoku, Tokyo/Japan
Tel: +813 5442 1609 E-mail: ipctanaka@gmail.com

CHINA

深圳市佰顺建筑材料有限公司
深圳市罗湖区春风路佳宁娜友谊广场A座1301室
Tel: +86 755 22300361 E-mail: stoneslikestones@163.com

HONGKONG Big Tomato Trading Ltd.

Rm. 48-51, 21/F, blcok F, Wah Lok Ind. Centre,
31-35 Shan Mei Street, Fo Tan, Shatin, HK
Tel: +852 2791 5995 E-mail: info@hkbigtomato.com

**SINGAPORE SHIGA FORMS & SURFACE
DESIGNS pte ltd**

Tel: +65 6786 1794 hp: +65 96379957
E-mail: joancai@gmail.com

stoneslikestones.cn